



COMMUNITY FIRST
HEALTH PLANS

LTSS Billing Matrix

Day Activity and Health Services (DAHS)



STAR Kids Members ages 18 and older with chronic medical conditions can benefit therapeutically from DAHS.

DAHS provides attendant care in a facility setting under the supervision of a nurse.

Services include nursing, physical rehabilitation, nutrition, social activities, and transportation (when other means of transportation are unavailable).

Adult Day Care (DAHS)

STAR Kids Members ages 18 through 21st birthday

- Update: HHSC has added **Modifier U6** for MDCP Members
- **Modifier U6 added to all codes to identify MDCP waiver members receiving state plan LTSS**
- Non-MDCP Members will continue to use the S5101 code

Service	Service Description	HCPC Code	Modifiers	Units
Adult Day Care (STAR Kids Members age 18 through 21st birth month)	Day Activities & Health Services	SS101		A minimum of 3 hours but less than 6 hours = 1 unit 6 hours or more = 2 units
Adult Day Care (STAR Kids Members age 18 through 21st birth month)	Day Activities & Health Services (MDCP)	SS101	U6	A minimum of 3 hours but less than 6 hours = 1 unit 6 hours or more = 2 units

Personal Care Services

- Personal Care Services (PCS) are available to STAR Kids Members from birth through age 20.
- PCS are considered medically necessary when a Member requires assistance with activities of daily living (ADLs), instrumental activities of daily living (IADLs), or health maintenance activities (HMAs) because of physical, cognitive, or behavioral limitations related to a disability or chronic health condition.



Personal Care Services (PCS)

Retired PCS Codes:

- T1019 U6 - PCS Agency Option (AO)
- T1019 US - PCS Service Responsibility Option (SRO)
- T1019 UC - PCS Consumer Directed Services (CDS) {No change}

BH Modifiers (for Members with a BH diagnosis/condition):

- T1019 UA U6 - PCS, BH Condition – AO
- T1019 UA US - PCS, BH Condition – SRO
- T1019 UA UC - PCS, BH Condition – CDS



New PCS Codes Effective 12/01/2022:

- T1019 U1 - PCS AO
- T1019 U2 - PCS SRO
- T1019 UC - PCS CDS {No change}



New BH Modifiers (for Members with a BH diagnosis/condition):

- T1019 UB U1 - PCS, BH Condition – AO
- T1019 UB U2 - PCS, BH Condition – SRO
- T1019 UB UC - PCS, BH Condition – CDS

HPCP Code	Modifier	Modifier Description
T1019	U1	Agency Model (AO)
T1019	U2	Service Responsibility Option (SRO)
T1019	UC	Consumer Directed Services Option (CDS)
T1019	UB	Behavioral Health Diagnosis or condition

Personal Care Services (PCS)

Service	Service Description	Service Delivery Model	HCPC Code & Modifier
Personal Care Services (PCS)	PCS	Agency Option	T1019 U1
Personal Care Services (PCS)	PCS	SRO	T1019 U2
Personal Care Services (PCS)	PCS	CDS	T1019 UC
Personal Care Services (PCS)	PCS -(BH Condition)	Agency Option	T1019 UB U1
Personal Care Services (PCS)	PCS - (BH Condition)	SRO	T1019 UB U2
Personal Care Services (PCS)	PCS - (BH Condition)	CDS	T1019 UB UC

Community First Choice (CFC)

Community First Choice (CFC) is a group of services delivered under the authority of Section 1915 of the Social Security Act.

Eligibility for CFC requires a STAR Kids Member to:

- be Medicaid eligible;
- meet the level of care provided in a nursing facility (NF), intermediate care facility for individuals with an intellectual disability or related conditions (ICF-IID), or an institution for mental disease (IMD); and
- have an assessed functional need for CFC services.

CFC services include personal care services (PCS), habilitation (HAB), emergency response services (ERS), and support management. If an individual is assessed to include habilitation, all PCS and habilitation time will be authorized as habilitation.



Community First Choice (CFC)

Retired CFC Codes

CFC Attendant Care (CFC - PCS)

- T1019 UD - CFC PCS Attendant care only (AO)
- T1019 U1 - CFC PCS Attendant care only (SRO)
- T1019 U3 - CFC PCS Attendant care only (CDS)

CFC Attendant Care and Habilitation (CFC - HAB)

- T1019 U9 - CFC PCS Habilitation & Attendant Care (AO)
- T1019 U2 - CFC PCS Habilitation & Attendant Care (SRO)
- T1019 U4 - CFC PCS Habilitation & Attendant Care (CDS)



New CFC Codes Effective 12/1/2022

CFC Attendant Care (CFC - PCS)

- T1019 UD U1 - CFC PCS Attendant care only (AO)
- T1019 UD U2 - CFC PCS Attendant care only (SRO)
- T1019 UD UC - CFC PCS Attendant care only (CDS)

CFC Attendant Care and Habilitation (CFC - HAB)

- T1019 U9 U1 - CFC PCS Habilitation & Attendant Care (AO)
- T1019 U9 U2 - CFC PCS Habilitation & Attendant Care (SRO)
- T1019 U9 UC - CFC PCS Habilitation & Attendant Care (CDS)



If the individual has any habilitation, all attendant care and habilitation will be authorized using HAB modifiers.

Add “U6” as the 3rd modifier for any MDCP member

HPCP Code	Modifier	Modifier Description
T1019	UD	CFC - Attendant Care (PCS) only
T1019	U9	CFC - Attendant Care (PCS) and Habilitation (HAB)
T1019	U1	Agency Model (AO)
T1019	U2	Service Responsibility Option (SRO)
T1019	UC	Consumer Directed Services Option (CDS)
T1019	U6	MDCP

Community First Choice (CFC)

Service	Service Description	Service Delivery Model	HCPC Code & Modifier
CFC Attendant Care	CFC PCS Attendant Care Only	Agency Option	T1019 UD U1
CFC Attendant Care	CFC PCS Attendant Care Only (MDCP)	Agency Option	T1019 UD U1 U6
CFC Attendant Care	CFC PCS Attendant Care Only	SRO	T1019 UD U2
CFC Attendant Care	CFC PCS Attendant Care Only (MDCP)	SRO	T1019 UD U2 U6
CFC Attendant Care	CFC PCS Attendant Care Only	CDS	T1019 UD UC
CFC Attendant Care	CFC PCS Attendant Care Only (MDCP)	CDS	T1019 UD UC U6
CFC Habilitation	CFC HAB	Agency Option	T1019 U9 U1
CFC Habilitation	CFC HAB (MDCP)	Agency Option	T1019 U9 U1 U6
CFC Habilitation	CFC HAB	SRO	T1019 U9 U2
CFC Habilitation	CFC HAB (MDCP)	SRO	T1019 U9 U2 U6
CFC Habilitation	CFC HAB	CDS	T1019 U9 UC
CFC Habilitation	CFC HAB (MDCP)	CDS	T1019 U9 UC U6

Emergency Response (ERS)

Community First Choice (CFC) emergency response services (ERS) are designed to assist individuals who live alone, are alone for large parts of the day, or have no regular caregiver for extended periods of time and who would otherwise require extensive routine supervision.

This service connects a Member to an ERS provider who notifies local authorities, like paramedics or a fire department, of a Member's emergency. This service is not routinely authorized for Members who are minors.

A Member must be cognitively able to recognize an emergency situation and be able to recognize the need to use CFC-ERS for CFC-ERS to be authorized.

HOW IT WORKS



PUSH

Button to help



SPEAK

To an operator



HELP

Is on the way

Emergency Response (ERS)

Retired Codes

- S5161 U3 U3 - ERS (monthly)
- S5160 - ERS installation and testing

HPCP Code	Modifier	Modifier Description
S5161	U2	CFC
S5161	U6	MDCP



New Codes Effective 12/1/2022

- S5161 U2 - ERS (Monthly) (CFC)
- S5161 U2 U6 - ERS (Monthly) (CFC) (MDCP) only
- ERS installation and testing has been removed.

Service	Service Description	HCPC Code & Modifier
Emergency Response	ERS (Monthly) (CFC)	S5161 U2
Emergency Response	ERS (Monthly) (CFC) (MDCP)	S5161 U2 U6
Emergency Response	Installation & testing	N/A

Nurse Delegation and Supervision

A delegated task is defined as a task that a physician or registered nurse (RN) delegates in accordance with state law.

The Texas Board of Nursing (BON) defines nurse delegation as **authorizing an unlicensed person to provide nursing services while retaining accountability for how the unlicensed person performs the task.**

Only an RN may delegate to an attendant under their supervision, per BON rules. A Member with a need for a skilled task may choose to have a paid attendant/unlicensed person assist with the delegated task **if it is a task that can be safely delegated by an RN.** Refer to BON rules for delegation of skilled tasks.

Nurse Delegation and Supervision

Retired Codes

- G0162 - RN assessment for delegation of PCS or CFC tasks
- G0162 U1 - RN training and ongoing supervision of delegated tasks

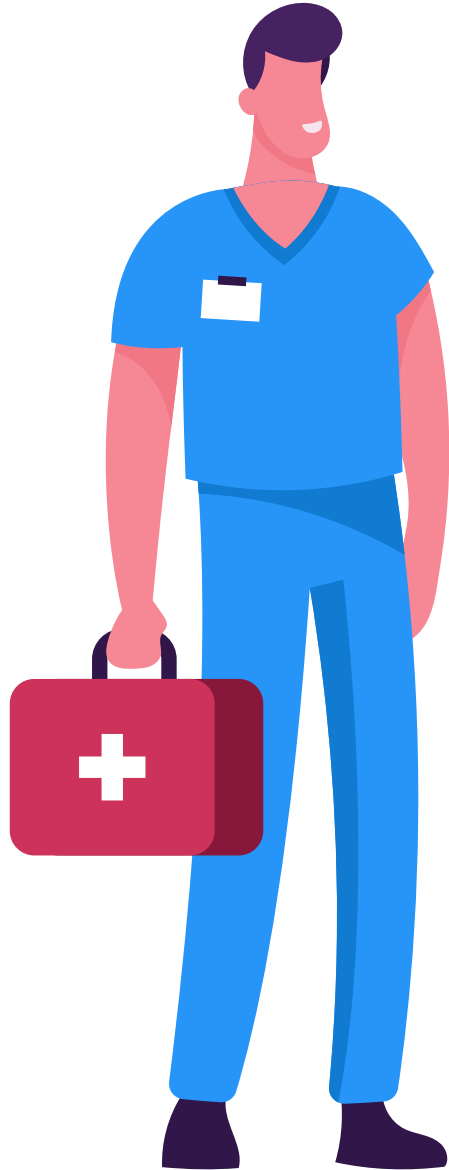


New Codes Effective 12/01/2022

- G0162 U1 - RN assessment for delegation of PCS tasks
- G0162 U1 U6 - RN assessment for delegation of PCS tasks (MDCP)
- G0162 U2 - RN assessment for delegation of CFC tasks
- G0162 U2 U6 - RN assessment for delegation of CFC task (MDCP)
- G0495 - RN training and ongoing supervision of delegated tasks
- G0495 U6 - RN training and ongoing supervision of delegated tasks (MDCP)

Service	Service Description	HCP Code & Modifier
Nurse Delegation and Supervision	RN Assessment for delegation of PCS tasks	G0162 U1
Nurse Delegation and Supervision	RN Assessment for delegation of PCS tasks (MDCP)	G0162 U1 U6
Nurse Delegation and Supervision	RN Assessment for delegation of CFC tasks	G0162 U2
Nurse Delegation and Supervision	RN Assessment for delegation of CFC tasks (MDCP)	G0162 U2 U6
Nurse Delegation and Supervision	RN training and ongoing supervision of delegated tasks	G0495
Nurse Delegation and Supervision	RN training and ongoing supervision of delegated tasks	G0495 U6

HCP Code	Modifier	Modifier Description
G0162	U1	RN Assessment for delegation of PCS tasks
G0162	U2	RN Assessment for delegation of CFC tasks
G0162	U6	MDCP



Private Duty Nursing (PDN)

Private Duty Nursing (PDN) services are a Texas Medicaid Texas Health Steps - Comprehensive Care Program (THSteps - CCP) benefit for STAR Kids Members.

PDN services are nursing services, as described by the Texas Nursing Practice Act and its implementing regulations, for clients who meet the medical necessity criteria and who require individualized, continuous, skilled care beyond the level of skilled nursing (SN) visits normally authorized under Texas Medicaid Home Health SN and Home Health Aide (HHA) services.

Private Duty Nursing

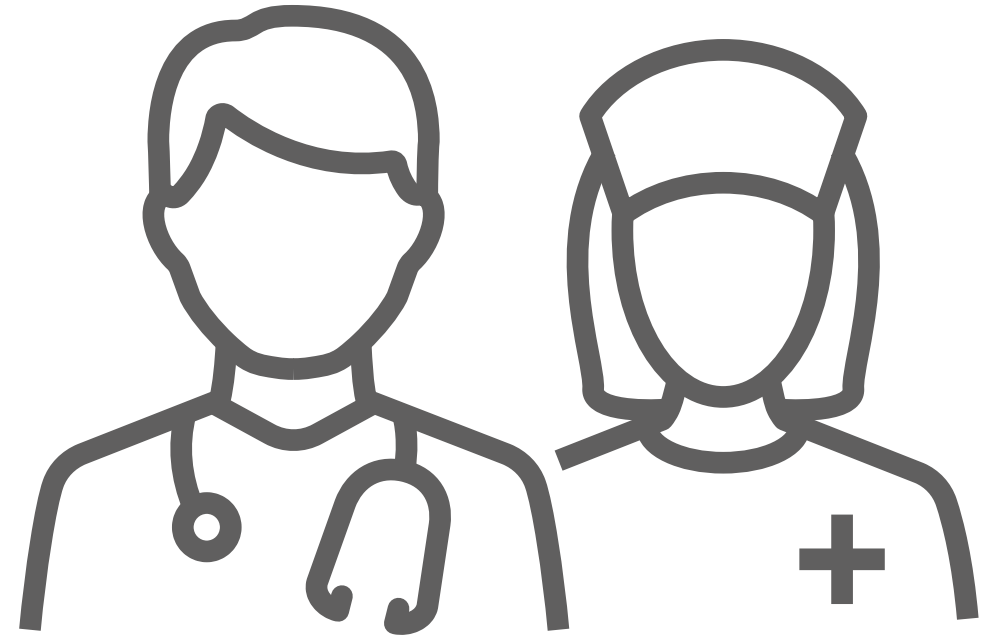
New Codes Effective 12/01/2022

T1000 TE PDN, LVN
 T1000 TE U6 - PDN, LVN (MDCP)
 T1000 TE UA - PDN, Specialized LVN
 T1000 TE UA U6 - PDN, Specialized LVN (MDCP)

 T1000 TD PDN, RN
 T1000 TD U6 - PDN, RN (MDCP)
 T1000 TD UA - PDN, Specialized RN
 T1000 TD UA U6 - PDN, Specialized RN (MDCP)

 T1000 U3 TE - PDN, Independently Enrolled LVN
 T1000 U3 TE U6 - PDN, Independently Enrolled LVN (MDCP)
 T1000 U3 TE UA - PDN, Independently Enrolled Specialized LVN
 T1000 U3 TE UA U6 - PDN, Independently Enrolled Specialized LVN (MDCP)

 T1000 U3 TD - PDN, Independently Enrolled RN
 T1000 U3 TD U6 -PDN, Independently Enrolled RN (MDCP)
 T1000 U3 TD UA - PDN, Independently Enrolled Specialized RN
 T1000 U3 TD UA U6 - PDN, Independently Enrolled Specialized RN (MDCP)



Previously, PDN was authorized as T1000 but was billed with the appropriate modifiers to indicate the personnel who delivered the service.

HPCP Code	Modifier	Modifier Description
T1000	TD	Registered Nurse (RN)
T1000	TE	Licensed Vocational Nurse (LVN)
T1000	U3	Independently Enrolled
T1000	UA	Specialized Service
T1000	U6	MDCP

Private Duty Nursing

Service	Service Description	HCPC Code & Modifiers
Private Duty Nursing	PDN, LVN	T1000 TE
Private Duty Nursing	PDN, LVN (MDCP)	T1000 TE U6
Private Duty Nursing	PDN, Specialized LVN *	T1000 TE UA
Private Duty Nursing	PDN, Specialized LVN (MDCP)*	T1000 TE UA U6
Private Duty Nursing	PDN, RN	T1000 TD
Private Duty Nursing	PDN, RN (MDCP)	T1000 TD U6
Private Duty Nursing	PDN, Specialized RN*	T1000 TD UA
Private Duty Nursing	PDN, Specialized RN (MDCP)*	T1000 TD UA U6
Private Duty Nursing	PDN, Independently Enrolled LVN	T1000 U3 TE
Private Duty Nursing	PDN, Independently Enrolled LVN (MDCP)	T1000 U3 TE U6
Private Duty Nursing	PDN, Independently Enrolled Specialized LVN*	T1000 U3 TE UA
Private Duty Nursing	PDN, Independently Enrolled Specialized LVN (MDCP)*	T1000 U3 TE UA U6
Private Duty Nursing	PDN, Independently Enrolled RN	T1000 U3 TD
Private Duty Nursing	PDN, Independently Enrolled RN (MDCP)	T1000 U3 TD U6
Private Duty Nursing	PDN, Independently Enrolled Specialized RN *	T1000 U3 TD UA
Private Duty Nursing	PDN, Independently Enrolled Specialized RN (MDCP)*	T1000 U3 TD UA U6

*The UA Specialized Services modifier may only be used for Private Duty Nursing for Members with a tracheostomy or who are ventilator dependent.

Prescribed Pediatric Extended Care (PPEC)

Prescribed Pediatric Extended Care (PPEC) services are provided in a non-residential facility licensed by Health and Human Services Commission (HHSC). PPEC serves four or more medically dependent or technologically dependent clients who are 20 years of age or younger and who require ongoing skilled nursing prescribed by the client's physician to avert death or further disability or require the routine use of a medical device to compensate for a deficit in life-sustaining body function.

Services must be included in a PPEC plan of care (POC) and are limited **to no more than 12 hours in a 24-hour period.** **PPEC services may not be provided overnight.**

PPEC services are intended as an alternative to private duty nursing (PDN). When the services duplicate, PPEC services must be a one-to-one replacement of PDN hours unless additional hours are medically necessary.

Members who receive or qualify for PDN also qualify for PPEC services. However, an admission authorized under this section is not intended to supplant the right of a Member to access PDN, PCS, Home Health Skilled Nursing (HHSN), Home Health Aide (HHA), and therapies (physical therapy, occupational therapy, speech therapy), as well as respiratory therapy and Early Childhood Intervention services rendered in the Member's residence when medically necessary.

Prescribed Pediatric Extended Care (PPEC)

Codes remain the same. MDCP modifiers added for all services.

Retired Codes

- T1025 - PPEC, greater than 4 hours
- T1026 - PPEC, up to 4 hours
- T2002 - Non-emergency transportation



New Codes Effective 12/01/2022

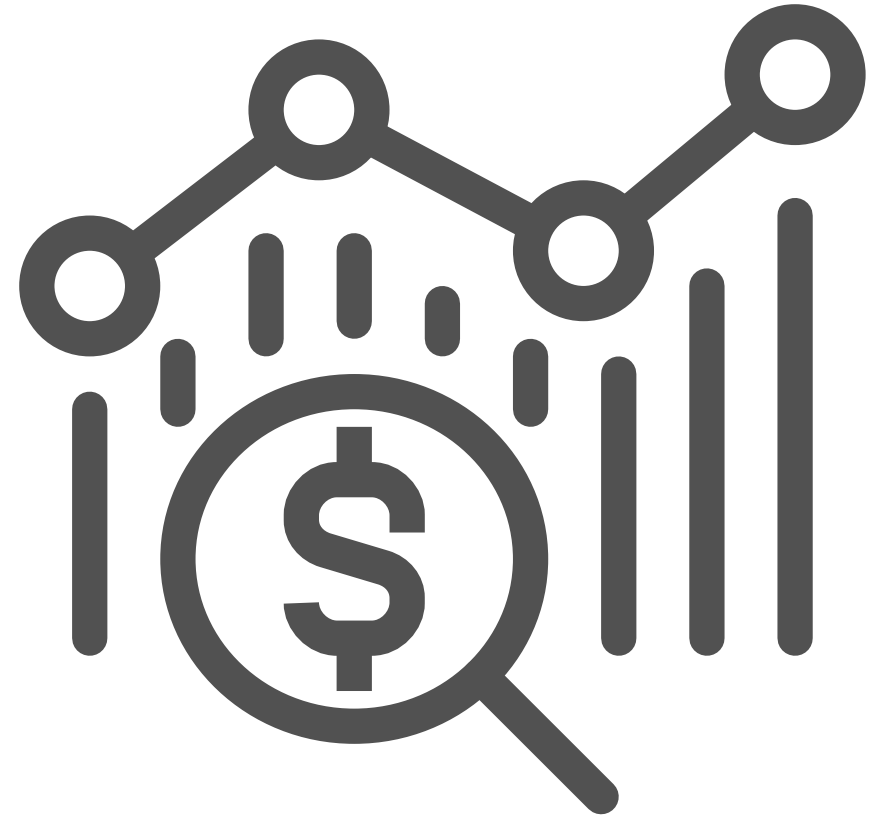
- T1025 - PPEC, greater than 4 hours
- T1025 U6 - PPEC, greater than 4 hours MDCP
- T1026 - PPEC, up to 4 hours
- T1026 U6 - PPEC, up to 4 hours MDCP
- T2002 - Per diem PPEC transportation
- T2002 U6 - Per diem PPEC transportation MDCP

Service	Service Description	HCP Code & Modifier
Prescribed Pediatric Extended Care	PPEC, greater than 4 hours	T1025
Prescribed Pediatric Extended Care	PPEC, greater than 4 hours (MDCP)	T1025 U6
Prescribed Pediatric Extended Care	PPEC, up to 4 hours	T1026
Prescribed Pediatric Extended Care	PPEC, up to 4 hours (MDCP)	T1026 U6
Prescribed Pediatric Extended Care	Non-emergency transportation	T2002
Prescribed Pediatric Extended Care	Non-emergency transportation (MDCP)	T2002 U6

Financial Management Services (FMS)

Financial Management Services (FMS) are services delivered by the financial management service agency (FMSA) to the Member or legally authorized representative (LAR).

These services include orientation, training, support, assistance with and approval of budgets, and processing payroll and payables on behalf of the Member or LAR when an individual selects the Consumer Directed Services (CDS) option for PCS, CFC PAS/ HAB, and respite.



Financial Management Services (FMS)

Retired Codes

- T2040 U8 - FMS, PCS
- T2040 U5 - FMS, CFC, non- MDCP
- T2040 U3 - FMS, MDCP (respite only)
- T2040 U4 - FMS CFC and MDCP (PAS/HAB with or without respite)



New Codes Effective 12/1/2022

- T2040 U9 U1 - FMS, monthly fee, PCS
- T2040 U9 U2 - FMS, monthly fee, CFC
- T2040 U9 U2 U6 - FMS, monthly fee, CFC MDCP (PAS/HAB with or without respite)
- T2040 U9 U6 - FMS, monthly fee, MDCP (respite only)

Service	Service Description	HCPC Code & Modifier
Financial Management Services	FMS Fee, Monthly Fee, PCS	T2040 U9 U1
Financial Management Services	FMS Fee, Monthly Fee, CFC	T2040 U9 U2
Financial Management Services	FMS Fee, Monthly Fee, CFC (MDCP)	T2040 U9 U2 U6
Financial Management Services	FMS Fee, Monthly Fee, MDCP	T2040 U9 U6

HPCP Code	Modifier	Modifier Description
T2040	U1	PCS
T2040	U2	CFC
T2040	U6	MDCP Member
T2040	U9	Monthly Fee

MDCP Services: In-Home Respite Care

Respite is a service that provides temporary relief to the Member's primary caregiver during the times when the primary caregiver would normally provide care.

- The primary caregiver may be the Member's parent(s), guardian, family member, or spouse if married.
- Respite may not be provided during the time the primary caregiver is at work, attending school, or in job training.



In-Home Respite Care

Retired Codes

- H2015 U1- Attendant, AO
- H2015 U1 US - Attendant, SRO
- H2015 U1 UC - Attendant, CDS
- H2015 U1 UA - Attendant with RN delegation, AO
- H2015 U1 UA US - Attendant with RN delegation, SRO
- H2015 U1 UA UC - Attendant with RN delegation, CDS

- H2015 U3 - LVN, AO
- H2015 U3 US - LVN, SRO
- H2015 U3 UC - LVN, CDS
- H2015 U3 UA - Specialized LVN, AO
- H2015 U3 UA US - Specialized LVN, SRO
- H2015 U3 UA UC - Specialized LVN, CDS

- H2015 U5 - RN, AO
- H2015 U5 US - RN, SRO
- H2015 U5 UC - RN, CDS
- H2015 U5 UA - Specialized RN, AO
- H2015 U5 UA US - Specialized RN, SRO
- H2015 U5 UA UC - Specialized RN, CDS



New Codes Effective 12/1/2022

- T1005 U4 U1 - Attendant, AO
- T1005 U4 U2 - Attendant, SRO
- T1005 U4 UC - Attendant, CDS
- T1005 U4 TD U1 - Attendant with RN delegation, AO
- T1005 U4 TD U2 - Attendant with RN delegation, SRO
- T1005 U4 TD UC - Attendant with RN delegation, CDS

- T1005 TE U1 - LVN, AO
- T1005 TE U2 - LVN, SRO
- T1005 TE UC - LVN, CDS
- T1005 TE U7 U1- Specialized LVN, AO (trach or vent)*
- T1005 TE U7 U2 - Specialized LVN, SRO (trach or vent)*
- T1005 TE U7 UC - Specialized LVN, CDS (trach or vent)*

- T1005 TD U1 - RN, AO
- T1005 TD U2 - RN, SRO
- T1005 TD UC - RN, CDS
- T1005 TD U7 U1 - Specialized RN, AO (trach or vent)*
- T1005 TD U7 U2 - Specialized RN, SRO (trach or vent)*
- T1005 TD U7 UC - Specialized RN, CDS (trach or vent)*

*The U7 Specialized Services modifier may only be used for In-Home Respite Care for a Member with a tracheostomy or who are ventilator dependent.

In-Home Respite Care

Service	Service Description	Service Delivery Model	HCP Code & Modifier
In Home Respite	Respite Care provided by an Attendant	Agency Option	T1005 U4 U1
In Home Respite	Respite Care provided by an Attendant	SRO	T1005 U4 U2
In Home Respite	Respite Care provided by an Attendant	CDS	T1005 U4 UC
In Home Respite	Respite Care provided by an Attendant with RN delegation	Agency Option	T1005 U4 TD U1
In Home Respite	Respite Care provided by an Attendant with RN delegation	SRO	T1005 U4 TD U2
In Home Respite	Respite Care provided by an Attendant with RN delegation	CDS	T1005 U4 TD UC
In Home Respite	Respite Care provided by a LVN	Agency Option	T1005 TE U1
In Home Respite	Respite Care provided by a LVN	SRO	T1005 TE U2
In Home Respite	Respite Care provided by a LVN	CDS	T1005 TE UC
In Home Respite	Respite Care provided by a Specialized LVN	Agency Option	T1005 TE U7 U1
In Home Respite	Respite Care provided by a Specialized LVN	SRO	T1005 TE U7 U2
In Home Respite	Respite Care provided by a Specialized LVN	CDS	T1005 TE U7 UC
In Home Respite	Respite Care provided by a RN	Agency Option	T1005 TD U1
In Home Respite	Respite Care provided by a RN	SRO	T1005 TD U2
In Home Respite	Respite Care provided by a RN	CDS	T1005 TD UC
In Home Respite	Respite Care provided by a Specialized RN	Agency Option	T1005 TD U7 U1
In Home Respite	Respite Care provided by a Specialized RN	SRO	T1005 TD U7 U2
In Home Respite	Respite Care provided by a Specialized RN	CDS	T1005 TD U7 UC

HCP Code	Modifier	Modifier Description
T1005	U4	Attendant
T1005	U1	Agency Model
T1005	UC	Consumer Directed Services Option
T1005	U2	Service Responsibility Option
T1005	TD	Registered Nurse (RN)
T1005	TE	Licensed Vocational Nurse (LVN)
T1005	U7	Specialized Service
T1005	U6	MDCP

MDCP Services: Out-of-Home Respite Care

Respite may be provided out of the home if indicated in a physician's order or if it is preferred by the Member and/or their legally authorized representative.

Out-of-home respite providers are:

- Special care facilities licensed by the Texas Health and Human Services Commission (HHSC);
- Daycare facilities licensed by the Texas Department of Family and Protective Services (DFPS);
- Hospitals licensed by DSHS and accredited by the Joint Commission on Accreditation of Healthcare Organizations (JCAHO);
- Nursing facilities licensed by the Texas Health and Human Services Commission (HHSC);
- Camps licensed by DSHS and accredited by the American Camping Association; and
- Foster families approved by a DFPS child-placing agency.



Resources:

[Take Time Texas | What is Respite?](#)

[Respite Care: Caring for the Caregiver | YouTube](#)



COMMUNITY
HEALTH PLANS

Out-of-Home Respite Care

New Codes Effective 12/1/2022

- S5151 663 - Respite Care, not hospice
- S5151 663 U1 - Respite Care, not hospice, with partial vent
- S5151 663 U2 - Respite Care, not hospice, with full vent
- S5151 663 U3 - Respite Care, not hospice, with trach

Service	Service Description	HCPC Code & Modifier
Out-of-Home Respite (Facility)	Respite Care, not hospice	S5151
Out-of-Home Respite (Facility)	Respite Care, not hospice, with partial vent	S5151 U1
Out-of-Home Respite (Facility)	Respite Care, not hospice, with full vent	S5151 U2
Out-of-Home Respite (Facility)	Respite Care, not hospice, with trach	S5151 U3
Out-of-Home Respite (Non-Facility)	Respite Care, Camp Setting	T2027

HCPC Code	Modifier	Modifier Description
S5151	U1	With Partial Vent
S5151	U2	With Full Vent
S5151	U3	With Pediatric Tracheostomy

MDCP Services: Flexible Family Support Services

Flexible family support services (FFSS) are individualized and disability-related services that support a Member to participate in age-appropriate activities such as:

- Childcare;
- Independent living; and
- Post-secondary education.

FFSS include personal care supports for basic and instrumental activities of daily living, skilled tasks, and delegated skilled task supports.

FFSS promote community inclusion in typical child and youth activities through the enhancement of natural supports and systems and through recognition that these supports may vary by child, provider, setting, and daily routine.



Family Service
SUPPORT. STRENGTHEN. SERVE.

Flexible Family Support Services

Retired codes

- H2015 99 U1 - Attendant, AO
- H2015 99 U1 US - Attendant, SRO
- H2015 99 U1 UC - Attendant, CDS
- H2015 99 U1 UA - Attendant with RN delegation, AO
- H2015 99 U1 UA US - Attendant with RN delegation, SRO
- H2015 99 U1 UA UC - Attendant with RN delegation, CDS

- H2015 99 U1 - LVN, AO
- H2015 99 U1 US - LVN, SRO
- H2015 99 U1 UC - LVN, CDS
- H2015 99 U1 UA - Specialized LVN, AO
- H2015 99 U1 UA US - Specialized LVN, SRO
- H2015 99 U1 UA UC - Specialized LVN, CDS

- H2015 99 U1 - RN, AO
- H2015 99 U1 US - RN, SRO
- H2015 99 U1 UC - RN, CDS
- H2015 99 U1 UA - Specialized RN, AO
- H2015 99 U1 UA US - Specialized RN, SRO
- H2015 99 U1 UA UC - Specialized RN, CDS



New Codes Effective 12/1/2022

- S9482 U4 U1 - Attendant, AO
- S9482 U4 U2 - Attendant, SRO
- S9482 U4 UC - Attendant, CDS
- S9482 U4 TD U1 - Attendant with RN delegation, AO
- S9482 U4 TD U2 - Attendant with RN delegation, SRO
- S9482 U4 TD UC - Attendant with RN delegation, CDS

- S9482 TE U1 - LVN, AO
- S9482 TE U2 - LVN, SRO
- S9482 TE UC - LVN, CDS
- S9482 TE U7 U1 - Specialized LVN, AO (trach or vent)*
- S9482 TE U7 U2 - Specialized LVN, SRO (trach or vent)*
- S9482 TE U7 UC - Specialized LVN, CDS (trach or vent)*

- S9482 TD U1 - RN, AO
- S9482 TD U2 - RN, SRO
- S9482 TD UC - RN, CDS
- S9482 TD U7 U1 - Specialized RN, AO (trach or vent)*
- S9482 TD U7 U2 - Specialized RN, SRO (trach or vent)*
- S9482 TD U7 U3 - Specialized RN, CDS (trach or vent)*

*The U7 Specialized Services modifier may only be used for Flexible Family Support Services for a Member with a tracheostomy or who is ventilator dependent.

Flexible Family Support Services

Service	Service Description	Service Delivery Model	HCPC Code & Modifier
Flexible Family Support Services	Attendant	Agency Option	S9482 U4 U1
Flexible Family Support Services	Attendant	SRO	S9482 U4 U2
Flexible Family Support Services	Attendant	CDS	S9482 U4 UC
Flexible Family Support Services	Attendant with RN delegation	Agency Option	S9482 U4 TD U1
Flexible Family Support Services	Attendant with RN delegation	SRO	S9482 U4 TD U2
Flexible Family Support Services	Attendant with RN delegation	CDS	S9482 U4 TD UC
Flexible Family Support Services	LVN	Agency Option	S9482 TE U1
Flexible Family Support Services	LVN	SRO	S9482 TE U2
Flexible Family Support Services	LVN	CDS	S9482 TE UC
Flexible Family Support Services	Specialized LVN	Agency Option	S9482 TE U7 U1
Flexible Family Support Services	Specialized LVN	SRO	S9482 TE U7 U2
Flexible Family Support Services	Specialized LVN	CDS	S9482 TE U7 UC
Flexible Family Support Services	RN	Agency Option	S9482 TD U1
Flexible Family Support Services	RN	SRO	S9482 TD U2
Flexible Family Support Services	RN	CDS	S9482 TD UC
Flexible Family Support Services	Respite Care provided by a Specialized RN	Agency Option	S9482 TD U7 U1
Flexible Family Support Services	Respite Care provided by a Specialized RN	SRO	S9482 TD U7 U2
Flexible Family Support Services	Respite Care provided by a Specialized RN	CDS	S9482 TD U7 UC

HCPC Code	Modifier	Modifier Description
S9482	U4	Attendant
S9482	U1	Agency Model
S9482	UC	Consumer Directed Services Option
S9482	U2	Service Responsibility Option
S9482	TD	Registered Nurse (RN)
S9482	TE	Licensed Vocational Nurse (LVN)
S9482	U7	Specialized Service

MDCP Services: Employment Services

Employment assistance (EA) is provided to a Member receiving Medically Dependent Children Program (MDCP) services to help the individual locate paid employment in the community and includes:

- Identifying a Member's employment preferences, job skills, and requirements for a work setting and work conditions;
- Locating prospective employers offering employment compatible with a Member's identified preferences, skills, and requirements; and
- Contacting a prospective employer on behalf of a Member and negotiating the Member's employment.



Employment Services

Supported employment (SE) services provide assistance to help a Member receiving Medically Dependent Children Program (MDCP) services sustain **competitive employment or self-employment**.

SE services include:

- Assistance provided to a Member to sustain competitive employment and who, because of a disability, requires intensive, ongoing support to be self-employed, work from home or perform in a work setting at which individuals without disabilities are employed;
- Employment adaptations, supervision, and training related to a Member's assessed need; and
- Ensuring Members earn at least minimum wage, if not self-employed.

Competitive employment is work:

- In the competitive labor market in which anyone may compete for employment that is performed on a full-time or part-time basis in an integrated setting; and
- For which a Member is compensated at or above the minimum wage but not less than the customary wage and level of benefits paid by the employer for the same or similar work performed by individuals without disabilities.

Employment Services

Retired Codes



- H2025 - Supported Employment, AO
- H2025 US - Supported Employment, SRO
- H2025 UC - Supported Employment, CDS
- H2023 - Employment Assistance, AO
- H2023 US - Employment Assistance, SRO
- H2023 UC - Employment Assistance, CDS

New Codes Effective 12/1/2022

- H2023 U1 - Supported Employment, AO
- H2023 U2 - Supported Employment, SRO
- H2023 UC - Supported Employment, CDS
- H2025 U1 - Employment Assistance, AO
- H2025 U2 - Employment Assistance, SRO
- H2025 UC - Employment Assistance, CDS

Service	Service Description	Service Delivery Model	HCPC Code & Modifier
Employment Services	Supported Employment	Agency Option	H2023 U1
Employment Services	Employment Assistance	Agency Option	H2025 U1
Employment Services	Supported Employment	CDS	H2023 UC
Employment Services	Employment Assistance	CDS	H2025 UC
Employment Services	Supported Employment	SRO	H2023 U2
Employment Services	Employment Assistance	SRO	H2025 U2

HCPC Code	Modifier	Modifier Description
H2023	U1	Agency Model (AO)
H2023	U2	Service Responsibility Option (SRO)
H2023	UC	Consumer Directed Services Option
H2025	U1	Agency Model (AO)
H2025	U2	Service Responsibility Option (SRO)
H2025	UC	Consumer Directed Services Option

MDCP Services: Adaptive Aids

Adaptive aids are devices necessary to treat, rehabilitate, prevent or compensate for conditions resulting in disability or loss of function and enable Members to:

- Perform activities of daily living (ADLs); or
- Control the environment in which they live.

A Member must exhaust any applicable Medicare, Medicaid, or other third-party resources for durable medical equipment and adaptive aids before adaptive aids available under the Medically Dependent Children Program (MDCP) are authorized.

A Member may take an adaptive aid to an out-of-home respite facility for use while residing there.



Adaptive Aids

No changes to current codes

Service	Service Description	Service Delivery Model	HCPC Code & Modifier
Adaptive Aids (Waiver)	Adaptive Aids - Not Otherwise Specified (NOS)		T2028
Adaptive Aids (Waiver)	Adaptive Aid - Medical Equipment		T2029
Adaptive Aids (Waiver)	Adaptive Aid - Vehicle Modification		T2039
Adaptive Aids (Waiver)	Adaptive Aids - Not Otherwise Specified (NOS)	CDS	T2028 UC
Adaptive Aids (Waiver)	Adaptive Aids - Medical Equipment	CDS	T2029 UC
Adaptive Aids (Waiver)	Adaptive Aid - Vehicle Modification	CDS	T2039 UC

- \$4,000 Annual individual service plan (ISP)

HCPC Code	Modifier	Modifier Description
T2028	UC	Consumer Directed Services Option
T2029	UC	Consumer Directed Services Option
T2039	UC	Consumer Directed Services Option

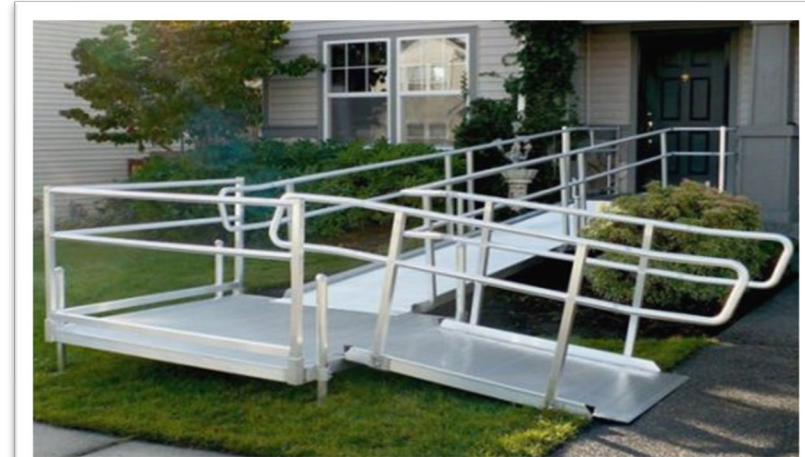
MDCP Services: Minor Home Modifications

A minor home modification is a **physical modification to a Member's residence** necessary to prevent institutionalization or support de-institutionalization.

Minor home modifications are necessary to ensure the health, welfare, and safety of the Member or to enable the Member to function with greater independence in their home.

If a home modification is requested and the Member or their legally authorized representative (LAR) does not own the home in which the modification will take place, the Member, LAR, or the Service Coordinator must obtain written agreement from the homeowner before a modification is authorized.

STAR Kids Managed Care Organizations (MCOs) may not require minor home modification providers to obtain a denial or explanation of benefits from a Member's primary insurance before seeking reimbursement for minor home modification services.



Minor Home Modifications

No changes to current codes

Service	Service Description	Service Delivery Model	HCPC Code & Modifier
Minor Home Modifications	Minor Home Modifications		S5165
Minor Home Modifications	Minor Home Modifications	CDS	S5165 UC

- \$7,500 Lifetime Budget
- \$300 per ISP Period for maintenance and repair

MDCP Services: Transition Assistance Services

The Service Coordinator must advise individuals who reside in a nursing facility (NF), or Members whose Medically Dependent Children Program (MDCP) services are suspended due to NF placement, of the availability of Transition Assistance Services (TAS).

TAS may be used if the individual needs assistance in setting up a household when relocating into the community from the NF.



Transition Assistance Services

No changes to current codes

Service	Service Description	HCPC Code
Transition Assistance Services	Transition Assistance Services	T2038

- \$2,500 One Time, Lifetime Limit

Authorizations & Configuration

- Authorizations with start dates on or after 12/1/2022 will use new codes & modifiers.
- Authorizations spanning over 12/1/2022 will be ended on 11/30/2022, and new authorization with new codes effective 12/1/2022 through current expiration.

Resources

- LTSS Billing Matrix Server Location:
<O:\Star Kids 2015\HHSC LTSS Billing Matrix>
- STAR Kids Handbook 4000
<https://www.hhs.texas.gov/handbooks/star-kids-handbook>